

For Shelley Johnson and Jim Kimmel, outstanding educators who nurtured my love of choral music.

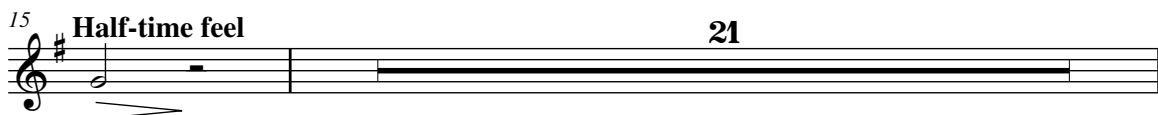
Knockin' Down the Walls

for SATB Voices with Keyboard Accompaniment and Optional Rhythm Section

Trumpet 2
in B \flat

JEFF FUNK

Driving Rock ($\text{♩} = \text{ca. } 152$)*



*PERFORMANCE NOTE: The tempo remains the same throughout the piece, as do the note values. At several points, the song moves into a half-time feel, then returns to double-time. This designation indicates a change in drum pattern and which beats are emphasized (i.e. snare on 3 for half-time; snare on 2 and 4 for double-time).

Copyright © 2009 by Carl Fischer, LLC
International Copyright Secured.

All rights reserved including performing rights.

WARNING! This composition is protected by Copyright law. To photocopy or reproduce by any method is an infringement of the Copyright law. Anyone who reproduces copyrighted matter is subject to substantial penalties and assessments for each infringement.

Printed in the U.S.A.

66 **Double-time** 3

mf *cresc.*

71

f

75

79 **Half-time feel**

83 **Double-time**

88 *2nd time only*

ff

92

96 1. *(Play)* 2.

ff *sub. mf cresc. poco a poco*

100

103

ff